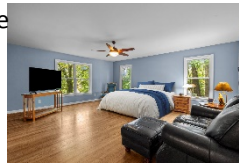


4811 NEW SHARON CHURCH ROAD FEATURES LIST

Overview:

- 17.5 acre estate -private pasture and hardwoods
- Tranquil
- Contemporary Farm house style home with 4,455 sq ft
- 4-bedroom
- Whole house Generator
- Unfinished Basement
- 2 car garage
- Deck & landscaped yard
- Covered front porch
- Fenced Backyard
- Greenhouse
- Convenient – to Durham/RTP/Duke/UNC
- Beautiful pastoral views
- 5 stall barn w/ tack & feed areas
- Ponds
- Large Overhang on Barn
- Run-in
- Pasture
- Chicken Coop



▪ Eat in Kitchen

- Laundry room with sink
- Large Primary bedroom
- Bonus room
- 10 mins to Hillsborough
- Convenient to Chapel Hill, Durham and RTP

● Outdoors:

- Greenhouse – 50'x30'
- Bird coop - 20'x8'

● Ponds

● Barn:

- 5 stall Barn – 36'x36'
- 12x12 stalls
- Tack/Storage room w/sink
- Hot and Cold Water
- Feed room
- Hay loft/storage – 49'x12'
- Run -in shed

● Pasture

- Paddock
- Covered Storage
- Fruit Trees

● Main House:

- Built in 1987
- Passive Solar Design
- 4 bedroom, 3.5 baths
- Bonus room
- Fireplace in living room
- Sunroom
- Formal dining room
- Office
- Mudroom
- Hardwood floors throughout the home
- Deck
- Fenced Yard
- Chefs Kitchen
 - Stainless Steel Appliances
 - Wolf Commercial Gas Stove
 - Hood Vent
 - Kitchen Island
 - Large sinks
- Dining:
 - Formal dining room

